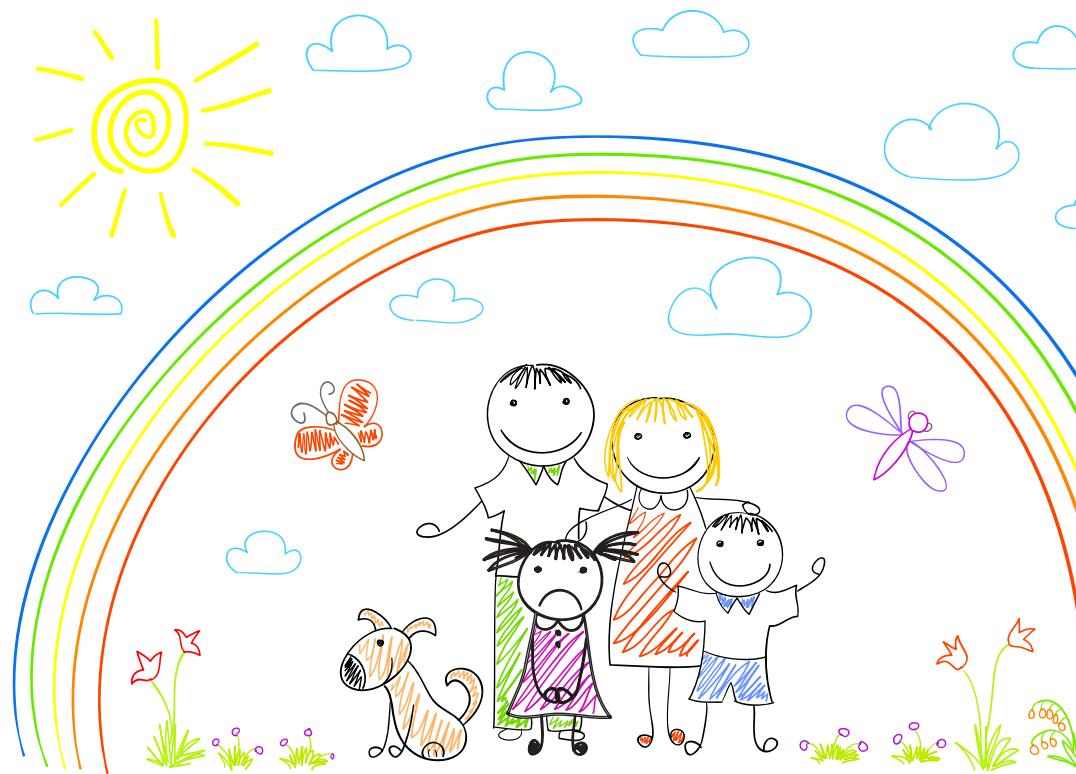


# Bracknell Forest Multi-Agency Safeguarding Hub (MASH)

A guide for professionals



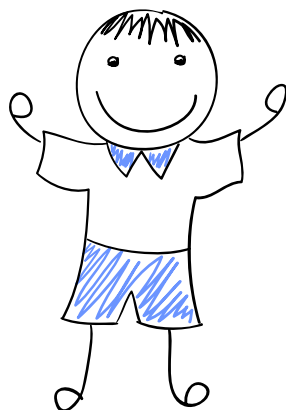
## What is a MASH?

The local authority and its partner agencies have established a Multi-Agency Safeguarding Hub (MASH) in Bracknell Forest.

The MASH brings a team of multi-disciplinary professionals from partner agencies together into the same room to deal with all safeguarding concerns of a child.

Within the MASH, information from partner agencies will be collated to assess risk and decide what action to take.

As a result, the agencies will be able to act quickly, in a co-ordinated and consistent way, ensuring that vulnerable children and families are kept safe.



### Who are the MASH partner agencies?

- Children's social care (including children with disabilities)
- Thames Valley Police
- Youth offending service
- Probation
- Early help service and family intervention team
- Housing
- Berkshire Women's Aid
- Community health and midwifery
- Mental health services
- Substance misuse
- Adult social care
- Education welfare

## The MASH process

1. Professional contacts/enquiries are received in the MASH via the online referral form (or referral emailed to the MASH) except for child protection referrals which need to be phoned in and will be passed immediately to children's social care.
2. A screening team of staff from partner agencies sitting in the MASH will analyse these contacts and jointly decide whether the contact goes into the MASH information sharing process.
3. The MASH team manager will prioritise contacts for MASH information sharing using a RAG (red, amber or green) rating.
4. Staff from every agency in the MASH including virtual partner agencies will gather and share information securely to enable an informed decision to be made.
5. Feedback on outcomes of the MASH process sent to the referrer.

### Contact details for Bracknell MASH

Tel: 01344 352005  
E-mail: MASH@bracknell-forest.gov.uk  
MASHgcsx@bracknell-forest.gcsx.gov.uk  
Website: [www.bracknell-forest.gov.uk/mash](http://www.bracknell-forest.gov.uk/mash)

To make a referral please visit: [www.bracknell-forest.gov.uk/mash](http://www.bracknell-forest.gov.uk/mash)

If you want to make a child protection referral please call:  
01344 352005

Emergency Duty Services – 01344 786543

*Available 5pm - 9am weekdays, 24hrs on weekends and bank holidays*